

excellent quality ,reliable partner
Kind Rigging-railing Co.,Ltd



Marine Hardware Catalog

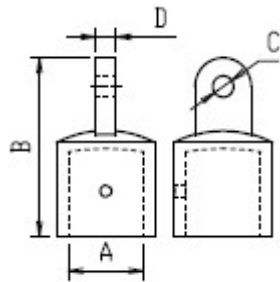
<http://www.kindrigging-railing.com>

Tel: 86-571-82833571

Fax: 86-571-82873444

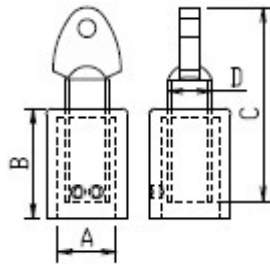
E-mail: sales@kindrigging-railing.com

info@kindrigging-railing.com



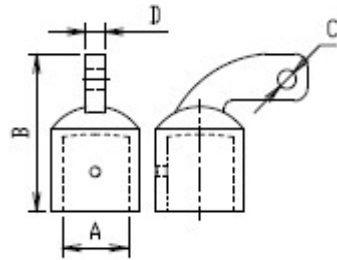
Top end cap

Code	A	B	C	D
01HM00A-3/4	19	58	6.5	7
01HM00A-7/8	22.2	58	6.8	7
01HM00A-1	25.4	58	6.8	7
01HM00A-1-1/4	31.75	65	8	9



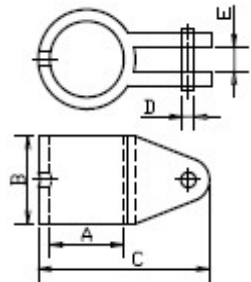
Special top slide

Code	A	B	C	D
01HM00B-7/8	22.2	37	75	M16
01HM00B-1	25.4	37	75	M16



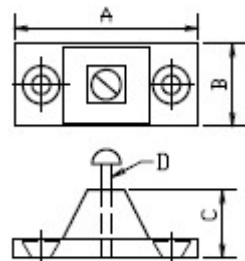
Ring hinge

Code	A	B	C	D
01HM00C-3/4	19	58	6.5	7
01HM00C-7/8	22.2	58	6.8	7
01HM00C-1	25.4	60	6.8	7
01HM00C-1-1/4	31.75	65	8	9



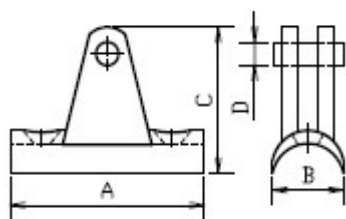
End slide

Code	A	B	C	D	E
02HT00A-3/4	19	22.5	44	M6	6.5
02HT00A-7/8	22.2	51	28	M6	8
02HT00A-1	25.4	54	28.5	M6	8
02HT00A-1-1/4	31.75	66	26.5	M6	8



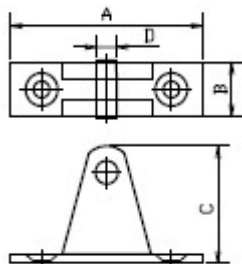
Hinge slide mounted

Code	A	B	C	D
03SZ00A-3/4	50.8	19.05	16.5	M5
03SZ00A-7/8	50.8	22.22	16.5	M5



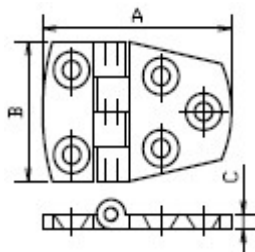
Deck hinge angle base A

Code	A	B	C	D
03SZ00B-7/8	57.15	22.2	38.5	6*40
03SZ00B-1	57.15	25.4	38.5	6*40



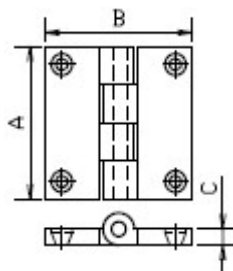
Deck hinge

Code	A	B	C	D
03SZ00C18	62	18	37	M5



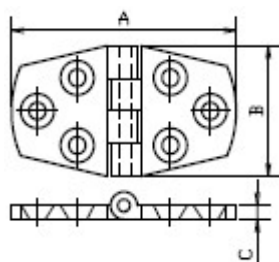
Door hinge C

Code	A	B	C
04HY00A56	56	38	4.5
04HY00A75	75	38	4.5



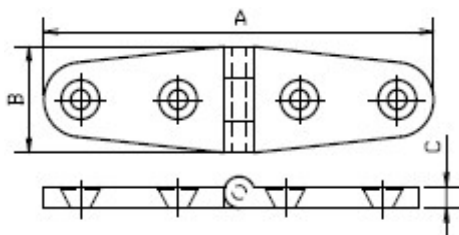
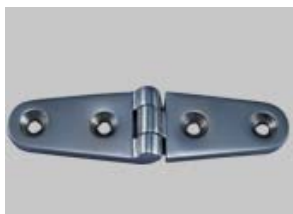
Butt hinge B

Code	A	B	C
04HY00B38	38.1	38.1	4.5
04HY00B50	50.8	50.8	4.5
04HY00B52	52	52	4.5
04HY00B60	60	60	4.5



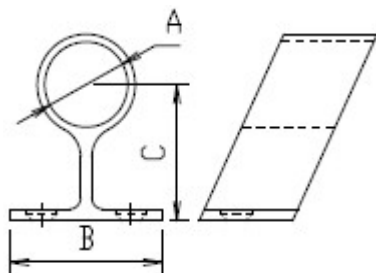
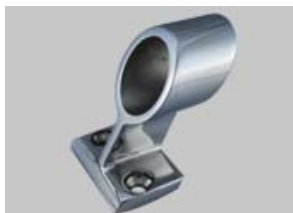
Door hinge A

Code	A	B	C
04HY00C76	76.2	38.1	4.5



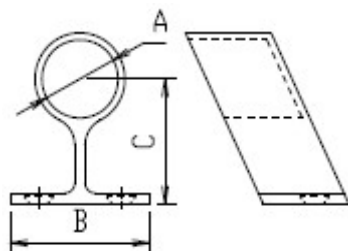
Door hinge A

Code	A	B	C
04HY00D100	100	25	4.5
04HY00D146	146	23	4.5



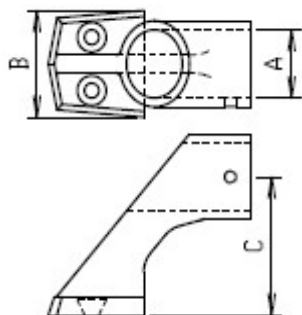
60 degree center stanchion

Code	A	B	C
05GZC00A-7/8	22.22	41	32.5
05GZC00A-1	25.4	41	40.5



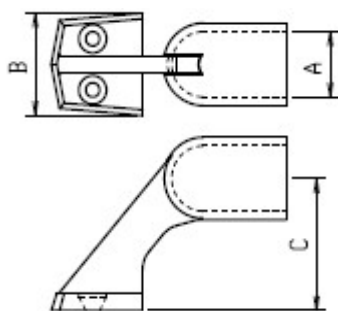
60 degree end stanchion

Code	A	B	C
05GZC00B-7/8	22.2	41	32.5
05GZC00B-1	25.4	41	40.5



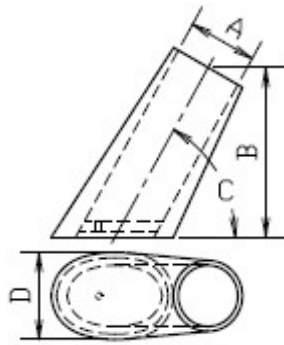
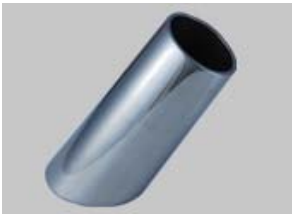
60 degree stanchion

Code	A	B	C
05GZC00C-7/8	22.2	37	52.6



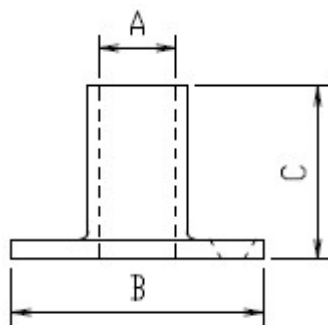
end stanchion 60

Code	A	B	C
05GZC00D-7/8	22.22	35	65
05GZC00D-1	25.4	34	55.88



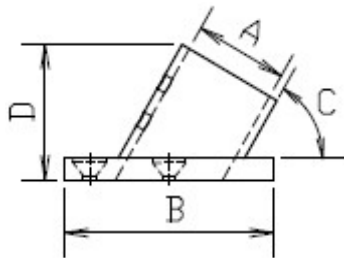
Base

Code	A	B	C	D
06GZ00A-60	54	33	60°	70
06GZ00A-90	52	33	90°	80
06GZ00A-75	58	33	75°	60



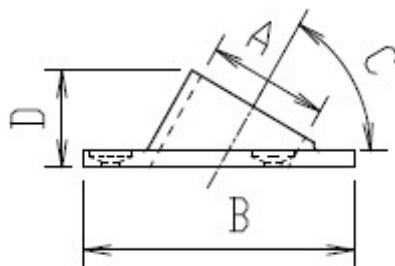
Straight round rail base

Code	A	B	C
06YGZ00B-7/8	22.2	66.7	45
06YGZ00B-1	25.4	69.7	42
06YGZ00B-7/10	30	74	44
06YGZ00B-7/11	40	84	42.5



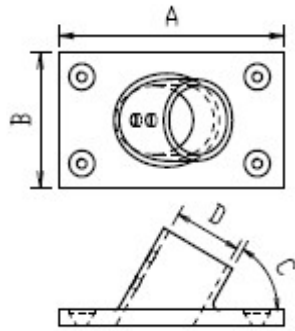
Slanting round rail base

Code	A	B	C	D
06YGZ30C-7/8	22.2	66.7	30°	37
06YGZ45C-7/8	22.2	66.7	45°	47
06YGZ60C-7/8	22.2	66.7	60°	39
06YGZ30C-1	25.4	73	30°	36
06YGZ45C-1	25.4	73	45°	37
06YGZ60C-1	25.4	69.9	60°	46



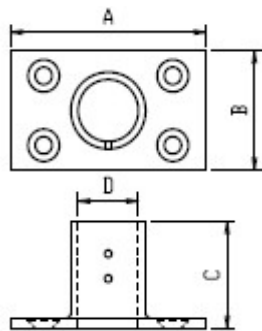
Welded round base

Code	A	B	C	D
06YGZ45D-7/8	22.2	66	45°	10
06YGZ60D-7/8	22.2	79	60°	10
06YGZ90D-7/8	22.2	66	90°	10
06YGZ45D-1	25.4	79	45°	12
06YGZ60D-1	25.4	79	60°	12
06YGZ90D-1	25.4	79	90°	12



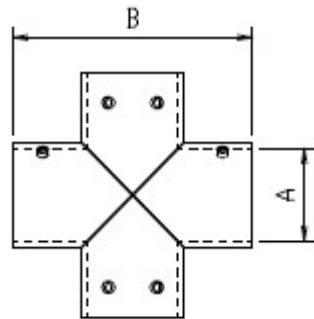
Slanting rectangular rail base

Code	A	B	C	D
06FGZ60E-7/8	77	43.5	60°	22.2
06FGZ60E-1	82	47	60°	25.4



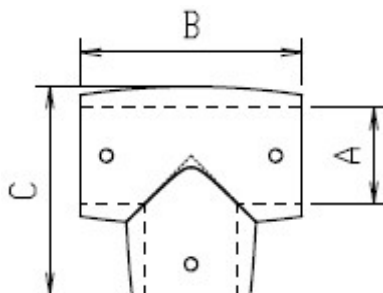
Straight rectangular rail base

Code	A	B	C	D
06FGZ90F-7/8	77	43.5	46	22.2
06FGZ90F-1	82	47	44	25.4
06FGZ90F-1-1/4	82	53	44	31.75



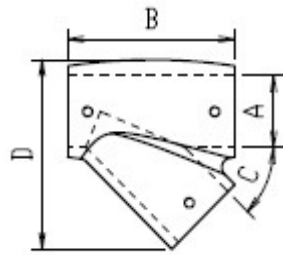
Four way rail

Code	A	B
07GJ04A-7/8	22.2	62
07GJ04A-1	25.4	84



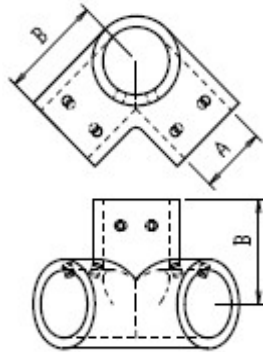
Three rail

Code	A	B	C
07GJ03B-7/8	22.2	52	52
07GJ03B-1	25.4	55	55
07GJ03B-1-1/4	31.75	76	83



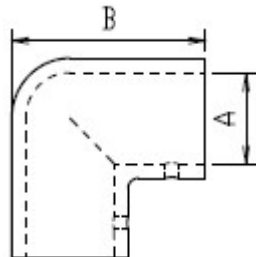
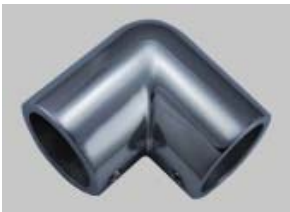
Tee rail

Code	A	B	C	D
07GJ03C-7/8	22.2	48	60°	57
07GJ03C-1	25.4	53	60°	60



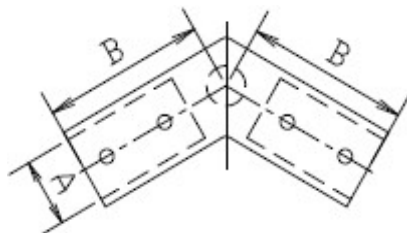
Rail corner 3 way

Code	A	B
07GJ03D-7/8	22.2	40
07GJ03D-1	25.4	50



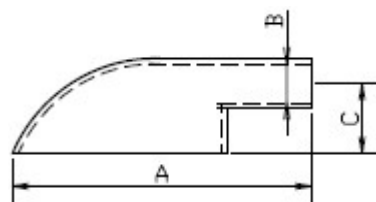
Elbow 90 degree

Code	A	B
07GJ02E-7/8	22.2	50
07GJ02E-1	25.4	51
07GJ02E-1-1/4	31.75	58.5



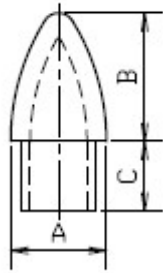
Rail fittings

Code	A	B	C
07GJ02F11-7/8	22.2	59	110
07GJ02F12-7/8	22.2	59	120
07GJ02F14-7/8	22.2	59	140
07GJ02F12-1	25.4	59	120
07GJ02F14-1	25.4	59	140



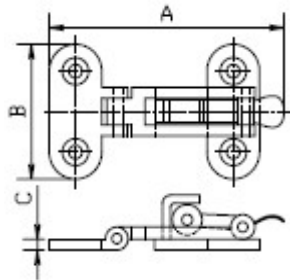
Bottom mount

Code	A	B	C
08ZZ00A-3/4	175	19.05	22.25
08ZZ00A-1	175	22.22	25.4



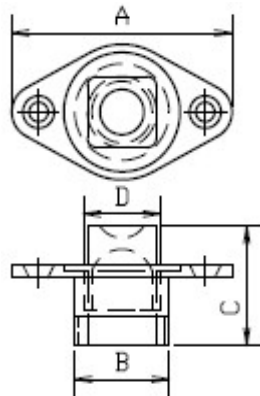
Bullet end plug

Code	A	B	C
08ZZ00A-3/4	175	19.05	22.25
08ZZ00A-1	175	22.22	25.4



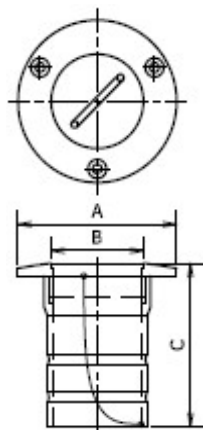
Eccentric latch A

Code	A	B	C
09JLX00A20	20	49	4



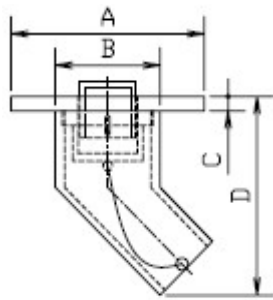
Deck filler F

Code	A	B	C	D
10FSK00A35	35	24	30	M24



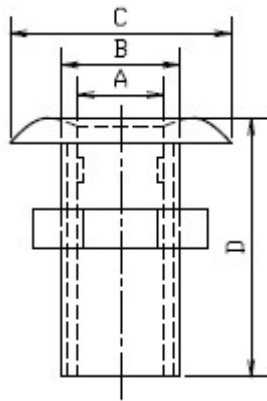
Deck filler with key

Code	A	B	C
11ZSK00A38	75	38.1	83
11ZSK00A50	87	50.8	86



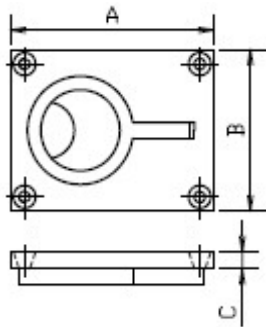
Deck filler D

Code	A	B	C	D
11ZYK00B59	88	59.5	6	97
11ZYK01B45	82.5	45.5	5.5	94



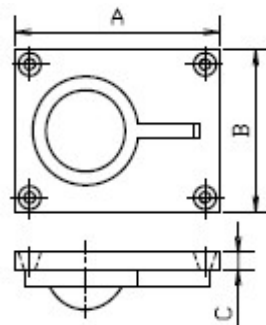
Through hull C

Code	A	B	C	D	E
12TQK00A-3/8	3/8				
12TQK00A-1/2	1/2				
12TQK00A-3/4	3/4	73	49	19	62
12TQK00A-1	1	80	54	25	71
12TQK00A-1-1/4	1-1/4	83	63	34	76
12TQK00A-1-1/2	1-1/2	85	70	38	79
12TQK00A-2	2	101	84	50.8	95
12TQK00A-3	3	127	117	76	120



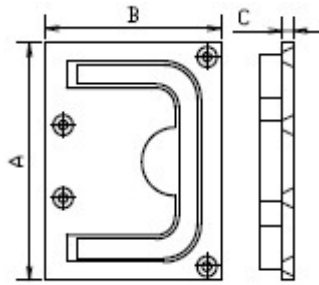
Flush lift ring A

Code	A	B	C
13DBK00A48	48	38	3



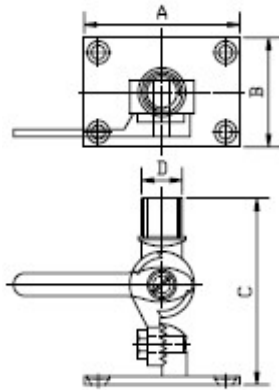
Flush lift ring B

Code	A	B	C
13DBK00B63	63	45	3.2



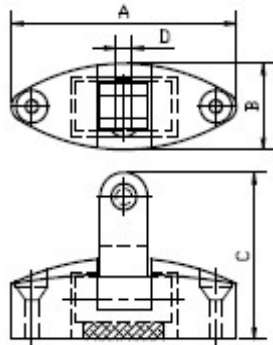
Flush lift ring C

Code	A	B	C
13CGJL00C76	76	57.5	3



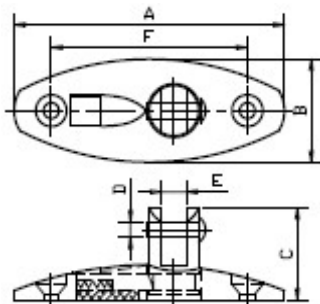
Rod holder A

Code	A	B	C	D
14TXZ00A96	96	64	100	1-1/4



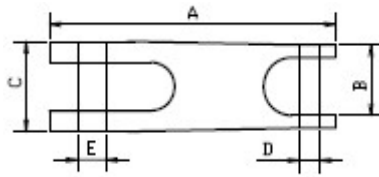
Quick release A

Code	A	B	C	D
14ZDJL00A70	70	26	53	5



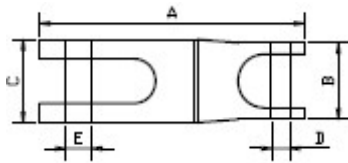
Quick release

Code	A	B	C	D	E
14KSJL00A82	82	32	30	5	8



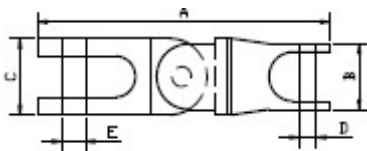
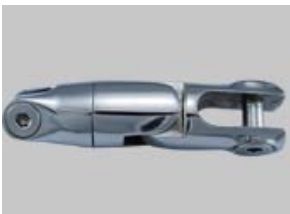
Anchor chain

Code	A	B	C	D
15DMLJ00A90	90	29	M10	M10
15DMLJ00A115	115	34.8	M12	M12



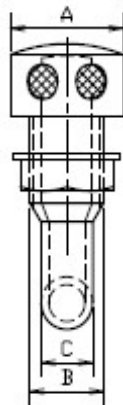
Swivel anchor chain

Code	A	B	C	D	E
15ZMLJ02B92	92	24	29	M9	M7
15ZMLJ02B120	120	22	28	M10	M10
15ZMLJ02B169	169	30	37	M10	M10



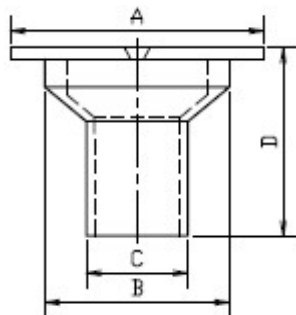
Double swivel anchor chain

Code	A	B	C	D	E
15ZMLJ03C120	120	22	28	M7	M9
15ZMLJ03C169	169	30	37	M10	M10



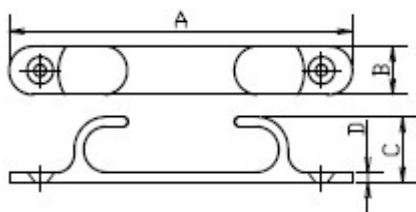
Tank-vent

Code	A	B	C	D	E
16TQK00A62	86	62	24	28	M18



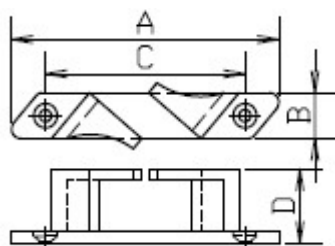
Cockpit drain

Code	A	B	C	D
17SL00A58	82	58	37	60



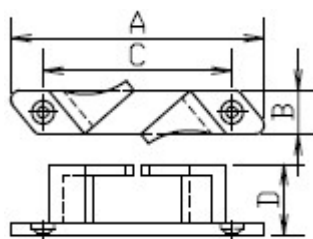
Straight chocks

Code	A	B	C
18DLZ00A121	121	23.81	27
18DLZ00A152	152.4	22.2	32
18DLZ00A203	203.2	12.7	38
18DLZ00A254	254	44.45	40



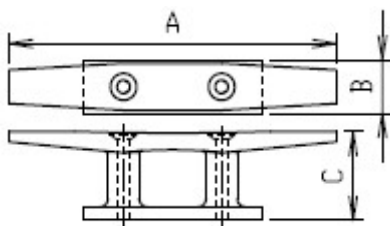
Skene chocks A

Code	A	B	C	D
18DLZ00B112	112.5	22.5	96.25	24.5
18DLZ00B114	114.3	19	85	30
18DLZ00B147	147.6	27	102	38
18DLZ00B150	150	34.25	122	29.5



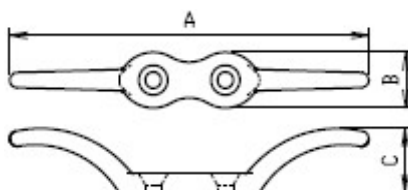
Skene chocks B

Code	A	B	C	D
18DLZ00C112	112.5	22.5	96.25	24.5
18DLZ00C114	114.3	19	85	30
18DLZ00C147	147.6	27	102	38
18DLZ00C150	150	34.25	122	29.5



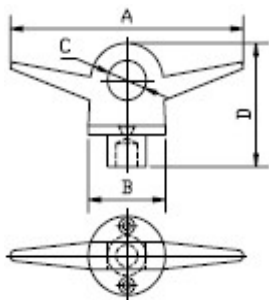
Surf-bollard cleat

Code	A	B	C	D
19BSS00A100	100	14	14	11
19BSS00A125	125	15	18	14
19BSS00A150	150	20	20	16
19BSS00A200	200	23	24	16
19BSS00A250	250	25	30	21



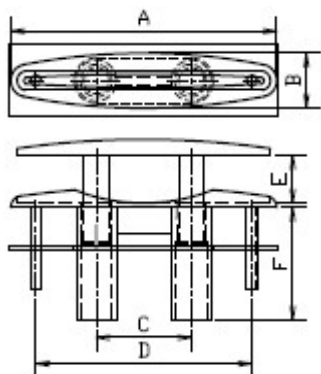
Mast cleat

Code	A	B
19YJSS00A151	151.5	26



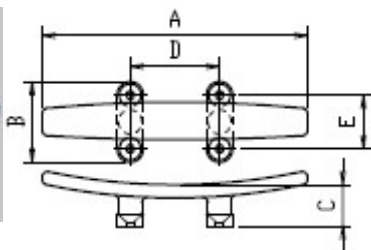
Pull ring

Code	A	B	C	D
19YJSS00B50	148	50	25	67.5



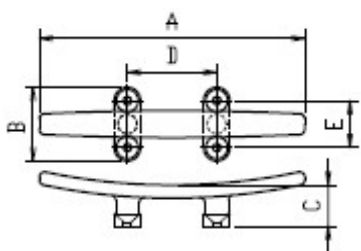
Push cleat

Code	A	B	C	D
20CLSS00A125	125	31	61.5	M6*40
20CLSS00A160	160	35	70	M10*48
20CLSS00A210	210	45	96	M10*66
20CLSS00A260	260	57	121	M12*80
20CLSS00A310	310	69	125	M12*80



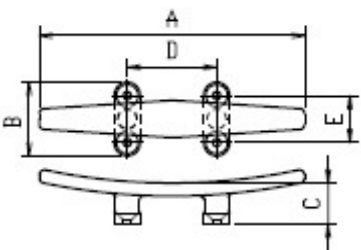
Low silhouette cleat

Code	A	B	C	D	E
20CLSS00B124	124.3	46	25.2	41.2	29.5
20CLSS00B148	148	56	28.7	40.2	39.5
20CLSS00B198	198.4	62	31.2	49.3	43.8
20CLSS00B254	254	63.7	40	57.6	44.8



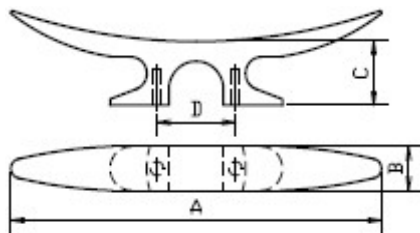
Long cleat

Code	A	B	C	D	E
20CLSS00C124	124.3	46	25.2	41.2	29.5
20CLSS00C148	148	56	28.7	40.2	39.5
20CLSS00C198	198.4	62	31.2	49.3	43.8
20CLSS00C254	254	63.7	40	57.6	44.8



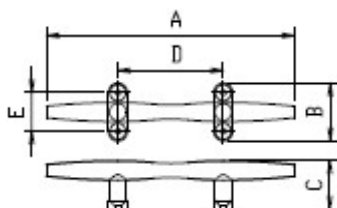
Cleat

Code	A	B	C	D	E
20CLSS00D124	124.3	46	25.2	41.2	29.5
20CLSS00D148	148	56	28.7	40.2	39.5
20CLSS00D198	198.4	62	31.2	49.3	43.8
20CLSS00D254	254	63.7	40	57.6	44.8



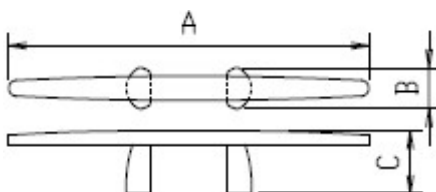
Cleat

Code	A	B	C	D
20CLSS00E240	240	28	41	55
20CLSS00E300	300	31	54	55



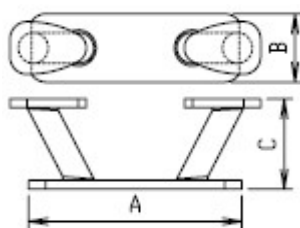
Hollow base cleat

Code	A	B	C	D	E
20CLSS00F101	101.6	36.4	25.4	48.3	22.3
20CLSS00F127	127	39	27.4	53.8	25.3
20CLSS00F152	152.4	46.2	31	56.9	26.1
20CLSS00F203	203.2	53.6	41.3	75.5	28.5
20CLSS00F254	254	65	50	95.1	44
20CLSS00F304	304.8	70.3	52.5	98.7	48.7



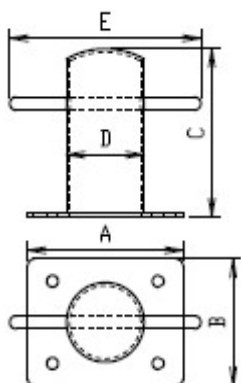
Cleat

Code	A	B	C
20CLSS00G150	150	44	15
20CLSS00G200	200	57	20
20CLSS00G250	250	75	26



Horn bollard

Code	A	B	C
20XCZ00A152	152	60	62
20XCZ00A203	203	70	77
20XCZ00A255	255	80	91
20XCZ00A310	310	90	109



Bollard

Code	A	B	C	D	E
21XCZ122	122	97	122	60.5	151
21XCZ350	350	350	270	120	280